

Annual Newsletter
Number 26

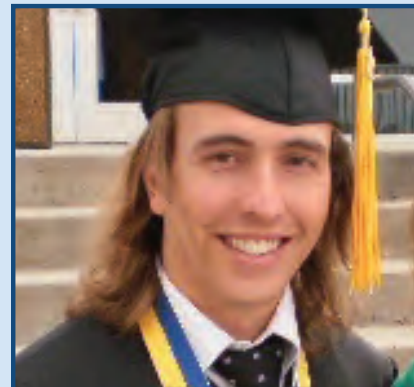


2010-11 Academic Year
November, 2011

Lambda Alpha

Scholarships, Awards and Honors Bestowed

Esteban Ferrero-Botero, Alpha of Montana chapter at the Montana State University, received the XXXVI National Lambda Alpha Senior Scholarship Award honored by a check for \$5000, a Charles R. Jenkins Certificate of Distinguished Achievement Award and a plaque. His faculty sponsor is Laurence Carucci, Ph.D



Lambda Alpha Graduate Overseas Research Grants for 2010-11 went to:

Paula Doumani
Washington University in St. Louis - Beta of Missouri
\$4000

*Bronze Age Potters in Regional Context: Long-term Development of Ceramic Technology
in the Eastern Eurasian Steppe Zone*

Deborah Moore
The University of Texas at San Antonio - Gamma of Texas
\$4000

*Investigation of a Savannah-Woodland Dwelling Chimpanzee Population in Western Tanzania,
Through Genetic Analysis*

Lambda Alpha

newsletter 2011

Contents

Cover

Scholarships, Awards and Honors Bestowed

Page 4

Charles R. Jenkins Award recipients

Page 5

New chapters
Our history

Page 6

Feature article

Page 7

News from the chapters

Page 10

Sponsors and lifetime members

Communications

To better communicate among chapters, the National Office would like all to join the LISTSERV by going to lambda_alpha@listserv.bsu.edu and click join or leave list, enabling you to send a message to those chapters that are subscribed. You may also want to link your web page to ours at: <http://cms.bsu.edu/Academics/CollegesandDepartments/Anthropology/LambdaAlpha.aspx>

Dear Faculty Sponsor:
The *Lambda Alpha Newsletter* is published annually (September) by the National Office of Lambda Alpha, at Ball State University, Muncie, Indiana. It is distributed to chapters of the Lambda Alpha National Collegiate Honors Society for Anthropology, and others who may be interested.

The newsletter is posted on our web site:
<http://cms.bsu.edu/Academics/CollegesandDepartments/Anthropology/LambdaAlpha.aspx>



Editor:

Dr. B.K. Swartz, Jr.,
National Executive Secretary
for Lambda Alpha

Department of Anthropology
Ball State University
Muncie, IN 47306-0435
bkswartzjr@gmail.com



Newsletter Compilation:

Barbara Di Fabio
Administrative Coordinator
for Lambda Alpha
(765) 285-5297
bdifabio@bsu.edu



Lifetime Membership Certificates:

Alice Owens, Calligrapher
Plymouth, Indiana

Newsletter Design:

Jeff Huffine
Huffine Design
Hagerstown, IN 47346

Lambda Alpha executive council



Dr. B. K. Swartz, Jr.
National Executive Secretary
Department of Anthropology
Ball State University
Muncie, IN 47306-0435



Dr. Marie Elaine Danforth
Member of the South
Department of Sociology & Anthropology
University of Southern Mississippi
Hattiesburg, MS 39406-5074



Dr. Mark D. Groover
Member for the Midwest
Department of Anthropology
Ball State University
Muncie, IN 47306-0435



Dr. Elwyn C. Lapoint
Member for the Northwest
1211 E. 18th Ave.
Spokane, WA 99203



Dr. Peer H. Moore-Jansen,
Editor in Chief
Lambda Alpha Journal
Department of Anthropology
Wichita State University
Wichita, KS 67260-0052



Dr. Faith R. Warner
Member for the East
Department of Anthropology
Bloomsburg University
Bloomsburg, PA 17815-1301

The executive council also includes the current national chapter student officers.

Recognize student achievement

As an honor society, Lambda Alpha acknowledges superiority and provides incentives for exceptional performance by granting certificates of accomplishment for all lifetime members, as well as a Charles R. Jenkins Certificate of Distinguished Achievement for applicants of the senior scholarship and graduate overseas research grants. Only applicants from chartered chapters qualify for the senior scholarship award of \$5000, and the graduate overseas research grants which vary in amount awarded. Individual chapters

are free to organize their own programs, providing an opportunity for faculty and students to work together on mutually advantageous projects. The editorial policy of the Lambda Alpha Journal provides for fifty percent of its space to be reserved for student publication. This offers students a unique opportunity to publish while still in school and to see their work in print in a respected national journal. Contact Editor-in-Chief, Peer Moore-Jansen, Ph.D. for details at pmojan@wichita.edu.

Recipients of the Charles R. Jenkins Certificate of Distinguished Achievement Award for 2010-11

Senior Applicants:

Eric Brouwer	Central Washington University	Gamma of Washington
Claire Brown	University of Notre Dame	Beta of Indiana
Kathryn Cross	James Madison University	Epsilon of Virginia
Esteban Ferrero-Botero	Montana State University	Alpha of Montana
Chelsea Fisher	The College of Wooster	Gamma of Ohio
John Giammatteo	Syracuse University	Delta of New York
Michael Giuletti	University of North Texas	Eta of Texas
Michael Granatosky	University of Florida	Delta of Florida
Felice Herman	Washington and Lee University	Zeta of Virginia
Carlyn James	University of Alabama	Beta of Alabama
Megan Keaveney	Denison University	Eta of Ohio
Elizabeth McGinley	Lake Forest College	Theta of Illinois
Julianne Rosewarne	Wagner College	Pi of New York
Jonathan Reeves	SUNY at Potsdam	Alpha of New York
Victoria Schlieder	Bloomsburg University	Zeta of Pennsylvania
Eileen Slesman	Wheaton College	Beta of Illinois
Richard Williams	University of Missouri-St. Louis	Alpha of Missouri

Graduate Applicants:

Nino "Nutsa" Batiashvili	Washington University in St. Louis	Beta of Missouri
Clarissa Cagnato	Washington University in St. Louis	Beta of Missouri
Patricia Campbell	California State University, Fullerton	Eta of California
Paula Doumani	Washington University in St. Louis	Beta of Missouri
Christopher Gunn	University of Kentucky	Delta of Kentucky
Deborah Moore	University of Texas at San Antonio	Gamma of Texas
Daniel Nicholson	University of Texas-Pan American	Beta of Texas
Noah Simons	Central Washington University	Gamma of Washington
Senna Thornton-Barnett	Texas State University	Theta of Texas
Jing Xu	Washington University in St. Louis	Beta of Missouri

Five new chapters included in 193 chartered

Chi of California

University of California,
Merced

Zeta of New Jersey

Drew University

Eta of Virginia

University of Richmond

Zeta of Missouri

Truman State University

Rho of New York

SUNY/New Paltz

Our History

Lambda Alpha National Collegiate Honors Society for Anthropology was founded on March 15, 1968 at Wichita State University by student Darrell Casteel. Dr. Lowell D. Holmes became the first faculty sponsor for Alpha of Kansas.

Initially, Lambda Alpha was run by Wichita State students and problems ensued. Dr. Charles Jenkins, faculty sponsor for Alpha of Pennsylvania established in 1969 at Alliance College (closed in 1988), proposed that the position of National Executive Secretary be initiated. Wichita State agreed and chose Jenkins to assume the post on November 5, 1973. The present National Executive Secretary, Dr. B. K. Swartz, Jr., assumed the post on November 19, 1985 after Jenkins' death. Swartz established Alpha of Indiana at Ball State University in June, 1968, and remained faculty sponsor until his retirement in 2001.

The first issue of the *Journal of Man* was in January, 1969. Due to complaints of feminists, the publication was renamed *Lambda Alpha Journal* in 1991.

In 1975 Swartz proposed to Jenkins that Lambda Alpha offer a national scholarship award for seniors, presently in the sum of \$5000. Swartz has administered the scholarship from 1975 to the present. The publishers of *The National Dean's List* offered to Lambda Alpha an annual sum of \$1,000 for a scholarship for juniors in 1993. Due to the backing of the society in 2002, we introduced the Lambda Alpha Graduate Overseas Grants to help support thesis and dissertation research overseas. Chapters are notified annually in early January for application of these awards.

Feature Article

Lambda Alpha would like to encourage in-depth information on various chapter programs to be highlighted in our Annual Newsletter. If you have interesting material accompanied by color photos, please submit it to us for

consideration by early September. We would like to have a feature article for each future newsletter in addition to edited annual reports for our “News from the Chapters” section.

Beta of Alabama Mobilizes for Tornado Recovery

By Jason A. DeCaro, Marysia Galbraith, Vernon J. Knight, and Kathy Oths

Wednesday, April 27, 2011 witnessed an unprecedented outbreak of tornados across the southeast, including an extraordinarily violent tornado that cut right through the city of Tuscaloosa, leaving a six mile long trail of debris where neighborhoods and stores had been just moments earlier. The University of Alabama’s Department of Anthropology was fortunate. The storm bypassed the campus, and although some of our students lost their homes and property, nobody was injured.

Although many were without power or phone service, department members used a combination of telephones, social media, and social networks to confirm that all students, staff, and faculty were accounted for, and to identify who needed assistance. Starting on Friday, April 29, Anthropology students and faculty mobilized a recovery unit, using the department’s trusty pickup (usually reserved for archeological work) to navigate the debris-blocked roads and help storm victims salvage what they could from the remains of their homes and apartments. The departmental Facebook page became a key tool for organizing rescue teams that included over two dozen students and faculty. Under the leadership of Professor Kathy Oths and graduate students Erik Porth and Lauren Downs, the crew helped move out about a dozen students, alumni, and professors before the next rainstorm further damaged to tornado-ravaged property.

By the middle of the week after the tornado struck, it was increasingly difficult to enter affected neighborhoods without proper identification. National Guard troops and Tuscaloosa police had become leery of looters and sightseers posing as volunteers. So the team shifted focus. Working once again under the leadership of Dr. Oths, Erik and Lauren, about 30 members of the UA Anthropology Crew registered as a formal volunteer group. The crew’s efforts have included moving the entire contents of a local woman’s destroyed home, sorting donations, and performing house-by-house damage assessments in two historic districts on behalf of the City.

Throughout, the Anthropology crew has applied anthropological knowledge about social organization, social networks, and surveying techniques (along with a generous share of hard physical labor) to aid our community. We recognize that the recovery will be a long-term process, and plan to continue assisting the community throughout the months to come in any way we can.

This community is resilient. Amidst grief at the magnitude of the losses, we have great faith that Tuscaloosa will rebuild and emerge stronger than ever.



Anthropology graduate students and Beta of Alabama chapter members Erik Porth and Paul Eubanks help salvage furniture from the remains of graduate student Katie Grove’s home.



The Anthropology utility truck was the workhorse of post-tornado salvage operations in Tuscaloosa.

News from the chapters

AS A REMINDER – For an organization to develop and grow in our society it is important to have public relations activity. Publicity gives us visibility and our faculty sponsors are crucial in generating Lambda Alpha's publicity. It is important that others know that we give recognition to student achievement and support student anthropological research. The National Office and other chapters want to know what your chapter is doing. For these reasons it is necessary that an annual report

of your chapter activities be submitted to the National Office no later than April 1. Indeed our by-laws (Article VII: Section 9) specify that such a report be made. Useful items to include are accomplishments, recognitions, and ongoing efforts of individual members connected with your department; and cooperative projects conducted under the aegis of Lambda Alpha such as lecture series, dedications, etc. Annual reports are selected and edited for admission to the Annual Newsletter.

Beta of Kentucky

Murray State University

Although our membership has dropped substantially in the past academic year, our members have been busy with a recruitment campaign. Murray State University has had several students declare an anthropology minor within the past several months, and we anticipate that many of them will be eligible for membership within the next academic year. Our chapter has continued to work with the Department of Geosciences' GeoClub to encourage interest and participation in anthropological events and issues both on campus and in the broader community. The members of Beta KY have also been designing and creating a prehistoric timeline for western Kentucky which we hope to display in the department by the Fall 2011 semester. During the upcoming academic year the members will also be assisting with the design and implementation of an archaeological test facility for geophysical surveying equipment on campus.

Gamma of Michigan

Eastern Michigan University

In Fall Term 2010 our two-year old chapter attracted campus-wide recognition by hosting its now regular Fall Open House meeting. This meeting continues to serve both to advertise the Anthropology Program and to announce the availability of chapter membership for eligible students. This was particularly important in the 2010-11 academic year because the SAC Department, housing our program together with programs in Sociology and Criminology/Criminal justice, lost its Department Head, and the Anthropology program saw the retirement of our most senior faculty, Professor Karen Sinclair. The involvement of our students may have constructively contributed to the selection of an anthropologist as Department Head by the end of Winter Term.

A program of yearly activities was discussed and planned at our Fall Open House meeting, including active participation in the search for a new Department Head, and discussion of student interests for course development correlated to possible new faculty hiring. Some of the other activities our chapter sponsored involved professional-development

events, such as visiting various exhibitions and attending on-campus and off-campus scholarly presentations while others were aimed at gathering information on matters of practical interest to members. In line with this, the program continued to explore ways to establish a website which would really serve as a valuable resource for all anthropology students on our campus, and possibly nationwide. Our efforts in this direction were brought to fruition through the expertise of our webmaster, and chapter honorary member/graduate associate, Kelly Johnston. The final construction work on the website will be completed over the summer, and we hope to officially present the website to our members and the campus community at our next Fall Open House.

Another chapter meeting was held early in the Winter Term, when a list of prospective members was approved and other applicants were encouraged to finalize their membership materials by the end of term. At the meeting we also elected the new roster of officers, and celebrated the forthcoming graduation of past officers.

Our chapter again co-sponsored, together with our Honors College, a workshop on “Going to Graduate School”. Student input was collected on how related information could be made available online, which we will try to do through our website. Finally, the program initiated in 2009, entitled Interdisciplinary Graduate Certificate in Cultural Museum Studies, to be directed by Dr. Cerroni-Long, was marshaled through the input system throughout this academic year, and by early spring was provisionally approved for possible implementation in 2012.

Zeta of North Carolina

University of North Carolina-Charlotte

Zeta chapter initiated 10 new members during the departmental awards ceremony held jointly with our friends in the Department of Sociology on May 4, 2011. During Spring 2011, in collaboration with the Anthropology Club, our members heard a presentation about linguistic anthropology from Dr. Eric Hoenes, from the University of California at San Diego. We also visited the American Anthropological Association’s exhibit, *Race: Are We So Different?*, at Discovery Place in Charlotte. Two faculty members, Dr. Janet Levy and Prof. Jon Marks, provided training to staff at Discovery Place and participated in media outreach about the exhibit, which received a great deal of positive attention in Charlotte.

Alpha of Oklahoma

University of Tulsa

Duane King, Ph.D., Vice-president for Museum Affairs and Director of Gilcrease Museum of the Americas, helped us celebrate the initiations of our new members with dinner and a lecture entitled “Cherokee Collaborations on an Exhibit Inspired by Treasures of the Gilcrease Museum.” Dr. King’s lecture focused on a delegation of Cherokee leaders who visited London in 1762, described his participation in the design of a traveling museum exhibition that documents this event, and drew attention to a number of important Gilcrease Museum holdings relevant to their embassy. Our members also met to discuss shared interests in anthropology, visited likely ethnic restaurants, and organized several lectures presented by students who have carried out archaeological research in Mexico and ethnographic study in Thailand.

Delta of Virginia

Longwood University

During this seventh year, we continued our informal dinner seminars, organized and participated in educational travel, and recruited twenty new members. Seventeen of our new members were able to attend our Departmental Honors Awards Banquet on April 14, where they were applauded and presented their ID cards, certificates, and graduation stoles. The other two honor societies in our department, although they represent programs with more students than we have in the Anthropology Program, had fewer students to initiate into their honor societies, which speaks highly of the quality of the students in our program and made us stand out in a highly visible way.

The most successful activity and tradition of our chapter has clearly been the informal dinner-discussion meetings which we began several years ago. We still meet every few weeks to discuss an article chosen by a student and just to have informal, intelligent discussion and to build community and support networks. A selection of students also organized and participated in a trip to Washington, D.C. to view the Written in Bone exhibit at the Museum of Natural History, along with several other exhibits which they house.

Lambda Alpha Chapters

2010-11 faculty sponsors and lifetime members

ALABAMA

Alpha of Alabama
Dr. Mark A. Moberg
Dept. of Anth./34 HUMB
University of South Alabama
Mobile, AL 36688-0002
mmoberg@jaguar1.usouthal.edu

Beta of Alabama
Dr. Marysia Galbraith
Dept. of Anthropology
The University of Alabama
Tuscaloosa, AL 35487-0210
mgalbrai@ua.edu
Rachel Bonner
Caroline Carden
Elizabeth Cooper
Casey Gipson
John Harris
Holley Hooks
Sara Horrocks
Elizabeth Hunt
Jenna James
Rachel Key
Howard Kurgain
Savannah Leach
Erinn Matthews
Brandon McLendon
Ted Nelson
Kaitlyn Parker
Kimberly Peace
Joshua Phillips
Erik Porth
Kimberly Roy
Sean Weaver

ALASKA

Alpha of Alaska
Dr. Paul White
Dept. of Anthropology
University of Alaska at
Anchorage, AK 99508-8334
afpiw@uaa.alaska.edu

ARIZONA

Alpha of Arizona
Dr. Michael Smith
Dept. of Anthropology
Arizona State University
Tempe, AZ 85287-2402
Michael.E.Smith2@asu.edu
Maria Amezquita
Sean Berry
Sean Covington
Eliza Fishbein
Mirtha Garcia
Meredith Mahaney
Daniel Milner
Andrea Nowbath
Clinton Pullam
Jennifer Row
Daniel Sadoway
Gaarrett Trask

ARKANSAS

Alpha of Arkansas
Dr. Juliana Flinn
Dept. of Soc. & Anth.
University of Arkansas at
Little Rock, AR 72204-1099
jbflinn@ualr.edu

Beta of Arkansas
Dr. Anne Goldberg
Dept. of Soc. & Anth.
Hendrix College
Conway, AR 72032
goldberg@hendrix.edu
Maria Balduf
Alyssa Barrineau
Hannah Carnack
Alice Cawley
Mary Clancy
Amy Fontenot
Bethany Grove
Kyriane Johnson
Hannah McGrew
Jake Mitchael
Elizabeth Morgan

Gamma of Arkansas
Dr. Justin M. Nolan
Dept. of Anthropology
University of Arkansas at
Fayetteville, AR 72701
jmnolan@uark.edu
Debre Allen
Ashley Applegate
Chad Armstrong
Nancy Browning
Tiffany Campbell
Michelle Dougherty
Margaret Downs
Gregory Edgmon
Emily Fitzgerald
Sarah Glass
Donal Goetz
Lindsey Hamm
Jessi Hanley
Nina Henry
James Johnson
Ashley Kupillas
Katherine Langley
Daniel Leimer
Kristian Magby
Alexander Mitchell
Joshua Moore
Marialison Murry
Rachael Pellegrino
Lauren Persing
Amanda Phillips
Douglas Provaznik
Heather Randall
Meagan Richards
Andrea Riemenschneider
Katharine Serio
Melonie Simpson
Adam Smith
Ian Smith
Jackson Spradley

Mark Sutherland
Carolyn Townsend
Addie Webb
James Wesolowski
Anna Wieser
Mariel Williams
Timothy Yopp
Melissa Zolnierz

CALIFORNIA

Alpha of California
Dr. Jesse A. Dizard
Dept. of Anthropology
California State University at
Chico, CA 95929

Beta of California
Dr. Liam Murphy/Dr. Terri Castaneda
Dept. of Anthropology
California State University
Sacramento, CA 95819-6106
lmurphy or tac@csus.edu
Carrie Dee Cohen
Lacey Kalber
Sara Mae McKerrihan
Christina Preston

Gamma of California
Dr. Alana Cordy-Collins
Anthropology Program
University of San Diego
San Diego, CA 92110-2492
Marissa Branca
Leigh Chadwick
Zachary Darwish
Dante Farenga
Allison Galvan
George Gross
Wyatt Harrison
Michelle Kelly
Justin Kopicki
Nallely Manriques
Cheyenne McCarthy
Mary McCormick
Gabrielle McGinnis
Kaitlin Wright

Delta of California
Dr. Elizabeth Miller
Dept. of Anthropology
California State University-Los Angeles
Los Angeles, CA 90032-8220
bethmiller@calstatela.edu

Epsilon of California-INACTIVE:1992
Chair
Dept. of Anth. & Geo.
California State University-Stanislaus
Turlock, CA 95380-3953

Zeta of California-INACTIVE:1995
Dept. of Sociology
Occidental College
Los Angeles, CA 90041-3392

Eta of California
 Dr. Tricia Gabany-Guerrero
 Dept. of Anth./P.O.Box 6850
 California State University at
 Fullerton, CA 92834-6850
 trishcampbell@fullerton.edu
Theresa Barclay-Bear
Jessie Bonafede
Greg Corcoran
Christina De Lorenzo
Richard George
Bryan Gorrie
Jamie Gray
Katherine Halverson
Robyn Houts
Allison Hill
Caitlin Kantor
Russell Kendrick
Alyssa Kitchens
Escee Lopez
Emily Mackey
Rosa Palacios
Tucker Parris
Katheryn Rendon
Matthew Rice
Timothy Senesi
Lawrence Smith
Aleksandra Tirnanic
Jonathan Valdez
Ryan Verrengia
Caitlin Walsh

Theta of California
 Dr. Lawrence Cohen
 Dept. of Anthropology
 University of California
 Berkeley, CA 94720-3710

Iota of California
 Dr. Lynn Meisch
 Dept. of Anthropology
 Saint Mary's College of California
 Moraga, CA 94575-4613
 lynnmeis@stmmarys-ca.edu

Kappa of California
 Dr. Kristin Peterson
 Dept. of Anthropology
 University of California at
 Irvine, CA 92697-5100
 kris@uci.edu
Tracey Awad
Myles Brady
Jedrek Dineros
Jennifer Clausen
Peter Goett
Lavina Ho
Christine Lee
Nahal Nikroo
Maria Pakhdikian
Caroline Sisk
Natasha Strauss

Lambda of California
 Dr. Vince Gil
 Dept. of Anth./55 Fair Dr.
 Vanguard University
 Costa Mesa, CA 92626
 vgil@vanguard.edu
Savanna Court
Leigha Delgado
Amy Dorr
Mark Gutierrez
Sarah Heirendt
Andrea Tsavahidis
Cierra Wallace
Morgan Webster

Mu of California
 Dr. Phillip L. Walker/Cheryl Klein
 Dept. of Anthropology
 University of California at
 Santa Barbara, CA 93106
 pwalker@anth.ucsb.edu AND
 cheryl_bk@umail.ucsb.edu

Nu of California
 Dr. Janine Gasco
 Dept. of Anth./1000 E Victoria
 California State University at Dominguez Hills
 Carson, CA 90747
 jgasco@csudh.edu
Alicia Angel
Scott Bigney
Victoria Bullock
Ana Cuellar
Elsie Heredia
Kimberly Hinson
Celso Jaquez
Dylan Myers
Jessica Williams

Xi of California
 Dr. George Westermark
 Dept. of Anthropology & Sociology
 Santa Clara University
 Santa Clara, CA 95053-0261
 gwestermark@scu.edu
Micha Brodoff
Alexis Gandarilla
Shannon Lacey
Patricia Nevers
Nicole Mathwich
Kyla Moran
Mariam Mostamandy

Omicron of California
 Dr. Kimberly P. Martin
 Dept. of Soc. & Anth.
 University of La Verne
 La Verne, CA 91750
 martink@ulv.edu

Pi of California
 Dr. Elizabeth Weiss
 Dept. of Anthropology
 San Jose State University
 San Jose, CA 95192-0113
 eweiss@email.sjsu.edu

Rho of California
 Dr. Brian Hemphill
 Dept. of Soc. & Anth.
 California State University at
 Bakersfield, CA 93311-1099
 bhemphill@csu.edu

Sigma of California
 Dr. Lauren Arenson
 Social Science Div./C320
 Pasadena City College
 Pasadena, CA 91106-2003
 ljarens@pasadena.edu
Krishna Hernandez-Pruhs
Danielle Kelly
Aimee Van Havermaat

Tau of California
 Dr. Gary W. Pahl
 San Francisco State University
 San Francisco, CA 94132
 gpahl@sfsu.edu

Upsilon of California
 Dr. David U. Iyam
 Dept. of Anthropology
 Whittier College

Whittier, CA 90608
 diyam@whittier.edu

Phi of California
 Dr. Janet Hoskins
 Dept. of Anth./GFS120
 University of Southern California-
 Los Angeles, CA 90089-1692
 jhoskins@usc.edu

Chi of California
 Dr. Holley Moyes
 Dept. of Anth./5200 N. Lake, Bldg. A
 University of California at
 Merced, CA 95343
 hmoyes@ucmerced.edu

COLORADO

Alpha of Colorado-INACTIVE:1984
 Chair
 Dept. of Anthropology
 Colorado State University
 Fort Collins, CO 80523

Beta of Colorado
 Dr. David Kozak
 Dept. of Anthropology
 Fort Lewis College
 Durango, CO 81301-3999
 kozak_d@fortlewis.edu

Gamma of Colorado
 Dr. M. Dores Cruz
 Dept. of Anthropology/146 Sturm Hall
 University of Denver
 Denver, CO 80208
 mdores.cruz@du.edu
David Garrison
Paul Swader
Kelly Lynch

Delta of Colorado
 Dr. Minette Church
 Dept. of Anthropology
 University of Colorado
 Colorado Springs, CO 80933-7150
 mchurch@uccs.edu
Brian Brockman
Janet Calderon
David Callaway
Jennifer Champlyn
Amethyst Davis
Jeffrey Embry
Sebryna Flugrath
Alicia Gutscher
Klint Jahulb
Jeffery Mikules
Kyle Miller
Cassandra Schissel
Erica Ward
Rachel Wolk

Epsilon of Colorado
 Dr. Lynn Sikkink
 Dept. of Anth./128 Hurst
 Western State College
 Gunnison, CO 81231
 lsikkink@western.edu
Ian Anderson
Jamie Hamsa
Kelsey Schwartz
Mark Stiger
Rachel Webb

CONNECTICUT

Alpha of Connecticut
 Dr. Natalie Munro
 Dept. of Anthropology

University of Connecticut
Storrs, CT 06269-2176
natalie.munro@uconn.edu

Geoffrey Battista
Allison Casaly
Paige Casaly
Kristina Fica
John Flanagan
Margaret Guelakis
Anastasiya Hudzen
Katherine McAlpine
Andrew Meguerdichian
Martina Parashkevova
Ricardo Sanchez
Robyn Ventriglio
Arthur Waite

Beta of Connecticut
Dr. Michael Park
Dept. of Anthropology
Central Connecticut State University
New Britain, CT 06050-4010
parkm@ccsu.edu
Kevin Hovick
Katherine Johns
Sara Larkin
Robert Sand
Daylah Smith
Matthew Swieton
Ariane Thomas

FLORIDA

Alpha of Florida-INACTIVE:1974
University of South Florida

Beta of Florida
Dr. Arlene Fradkin
Dept. of Anthropology
Florida Atlantic University
Boca Raton, FL 33431-0991
afradkin@fau.edu

Gamma of Florida
Dr. Diane Z. Chase
Dept. of Anth. & Soc.
University of Central Florida
Orlando, FL 32816-0990
chase@ucf.edu

Delta of Florida
Dr. John Krigbaum
Dept. of Anthropology
University of Florida
Gainesville, FL 32611-7305
krigbaum@anthro.ufl.edu
Peter Andriotis
Lauren Andrito
Jessica Arizu
Andrea Bartnick
Jessica Bartnick
Jason Breslin
William Busbey
Trevor Durham
Sven Engling
Austin Flinn
Sami Kattan
Brianna Kernan
Justin King
Taryn McEachrane
Elizabeth Minnick
Crystal Nunez
Abigail Probert
Christa Reynolds
Mackenzie Robinson
Amanda Rowe
Kaycee Smith
Cayla Stanley
Stephanie Trout

Epsilon of Florida
Dr. Abraham Lavender
Dept. of Global & Soc./SIPA 340
Florida International University
Miami, FL 33199
lavender@fiu.edu

GEORGIA

Alpha of Georgia
Dr. Frank Williams
Dept. of Anth. & Geo.
Georgia State University
Atlanta, GA 30303-3083
antflw@langate.gsu.edu

Beta of Georgia
Dr. Sally Gouzoules
Dept. of Anthropology
Emory University
Atlanta, GA 30322
sgouzou@emory.edu

Charles Barber, II
Nancy Clayton
Kenneth Crutcher
Ehren Dancy
Marlise Elgart
Lauren Granholm
Elizabeth Harlan
Mariangela Jordan
Lara Kacherian
Kelly Kenyon
MarQuita Kilgore
Julie Margolis
William Matthews
Alana Meikle
Brittany Milliner
Alicia Narcisse
Thanh Nguyen
Selin Nugent
Mary Pavlak
Caren Remillard
Kathrine Seiler
Sasha Shackelford
R. Wes Smith
Lior Vardi
Lily Yu

Gamma of Georgia
Dr. Heidi Altman
Dept. of Sociology & Anthropology
Georgia Southern University
Statesboro, GA 30460-8051
haltman@gasou.edu
Rachael Cochran
Emily Detmer
Ashley Gilmore
Jesse Loughman
Danielle Scudder
Jordan Tompkins
Jennifer Williams
Teri Wogan

Delta of Georgia
Dr. Lisa Gezon
Dept. of Anthropology
University of West Georgia
Carrollton, GA 30118-2140
lgezon@westga.edu
Rachael Carlson
Christina Crim
Caitlin Flanagan
Samantha Jumper
Donald Lovell
William Phillips
Sara Shackelford

Epsilon of Georgia
Dr. Wayne Van Horne
Dept. of Geo. & Anth.
Kennesaw State University
Kennesaw, GA 30144-5591
wvanhorn@kennesaw.edu

Katherine Binns
Andrew Carlin
Lindy Crapps
Tamara Davis
Serita Fleming
Chanay Gatlin
Joshua Hardin
Nathan Lambert
Robert Reece
Kevin Spears
Maureen Stallworth
Katie Swindle
Donald Weaver
Aletha Wilson

Zeta of Georgia
Dr. Peter Brosius
Dept. of Anth./250 Baldwin
The University of Georgia
Athens, GA 30602-1619
pbrosius@uga.edu

Ashley Burns
Christopher Cameron
Kristina Johnson
Kyle Norris
Christopher Nutgrass
Amanda Reinke
Joshua Rosenstein
Edward Staples
Rachel Sussman
Lana Turner
Claire Woestmann

GUAM

Alpha of Guam
Dr. Katherine Szabo
Dept. of Anth./UOG Station
University of Guam
Mangilao, GU 96923
kszabo@aguam.uog.edu

HAWAII

Alpha of Hawaii
Dr. Suzanne Falgout
Dept. of Anth./96-129 Ala 'Ike
University of Hawaii-West Oahu
Pearl City, HI 96782
falgout@hawaii.edu

Richie Biluan
Tracilyn Ohashi
Cherina Oyama-Jackson
Tiffany Prevo

Beta of Hawaii
Dr. Christine Yano
Dept. of Anth./346 Saunders
University of Hawaii-Manoa
Honolulu, HI 96822-2223
anthchr@hawaii.edu
Benjamin Herman

ILLINOIS

Alpha of Illinois
Dr. Gregory Vogel
Dept. of Anthropology
Southern Illinois University at
Edwardsville, IL 62026-1451
gvogel@siue.edu

Beta of Illinois
Dr. Dean E. Arnold
Dept. of Soc. and Anth.
Wheaton College

Wheaton, IL 60187-5593
 Dean.E.Arnold@wheaton.edu
Darlene Campos
Matthew Coombs
Amy Kaspar
Masako Kawate
Hannah Pinter
Nicole Quadros
Kari Rauh
Eileen Sleesman
Craig Swandby

Gamma of Illinois
 Dr. Charles Springwood
 Dept. of Soc. & Anth.
 Illinois Wesleyan University
 Bloomington, IL 61702-2900
 cspring@iwu.edu
Elizabeth Allen
Elizabeth Daniels
Robert Diehl
Laura Honess
Cassandra Jordan
Michelle Ponschke
Katelyn Scott
Shuting Zhong

Delta of Illinois
 Dr. Gretchen Dabbs
 Dept. of Anthropology
 Southern Illinois University at
 Carbondale, IL 62901-4502
 gdabbs@siu.edu

Epsilon of Illinois
 Dr. Daniel Amick
 Dept. of Anthropology
 Loyola University of Chicago
 Chicago, IL 60626
 damick@luc.edu
Leah Barren
Taylor Burton
JacqueLynne Day
Zaida Dedolph
Emily Mueller
Armaan Siddiqi
Kelly Smith
Mary Williams

Zeta of Illinois
 Dr. Robert Rotenbert
 Dept. of Anthropology
 DePaul University
 Chicago, IL 60614-3017
 rrotenbe@depaul.edu
Chelsea Cohen
Alessandra DeChancie
Marie Gravalos
Micaela Krol
Georgina Leal
Katie Reid
Heather Stebbins

Eta of Illinois
 Dr. Joel Palka
 Dept. of Anth./1007 W. Harrison St.
 University of Illinois at Chicago
 Chicago, IL 60607-7139
 jpalka@uic.edu

Theta of Illinois
 Dr. Alex Mawyer
 Dept. of Soc. & Anth.
 Lake Forest College
 Lake Forest, IL 60045-2399
 mawyer@lakeforest.edu

Iota of Illinois
 Dr. Jon Hageman
 Dept. of Anth./5500 N. St. Louis
 Northeastern Illinois University
 Chicago, IL 60625-4699
 jhageman@neiu.edu

Kappa of Illinois
 Dr. Fred Smith
 Dept. of Soc. & Anth.
 Illinois State University
 Normal, IL 61790-4660
 fsmith@ilstu.edu
Mariana Aldana
Brianna Andrews
Sarah Biehl
Jenna Carlson
Jessica Griffin
Caiti Kopp
Hannah Meyer
Stephanie Owens
Jeffrey Painter
Cassandra Pardo
Elizabeth Wilk
Marissa Wojcinski
Amber Yerkes
Colleen Zwanzig

INDIANA

Alpha of Indiana
 Dr. Mark D. Groover
 Dept. of Anthropology
 Ball State University
 Muncie, IN 47306-0435
 mdgroover@bsu.edu
Cameron Cox
Jesse Fivecoate
Miranda Taubert
Pamee Thao
Kari Wilhems

Beta of Indiana
 Dr. Vania Smith-Oka/Diane
 Dept. of Anth./611 Flanner
 University of Notre Dame
 Notre Dame, IN 46556-5611
 diane.m.pribbernow.1@nd.edu
Nicole Allen
Elaine Amoresano
James Baffa
Melissa Coles
Jaime Cordes
Kathleen Corr
Rhiannon Duke
Bianca Fernandez
Colleen Flahive
Elise Gerspach
Theresa Gildner
Maeve Maher
Nicole Navas
Hanna O'Brien
Meredith Ragany
Kevin Rahill
Kerry Reardon
Lauren Restivo
Daniel Schmitt
Jennifer Schulte
Rebecca Sinclair
Melissa Wrapp
Elizabeth Young

Delta of Indiana
 Dr. Shawn Phillips
 Dept. of Anth., et al/Sci. Hall 147
 Indiana State University
 Terre Haute, IN 47809
 anphill@isugw.indstate.edu

Epsilon of Indiana
 Dr. Catherine Shoupe
 Dept. of Anthropology
 Saint Mary's College
 Notre Dame, IN 46556-5001
 cshoupe@saintmarys.edu
Meghan Helmle
Rebecca Jones
Alyssa Klubeck
Katherine Nelson
Ariel Terpstra
Gabriel Torres

Zeta of Indiana
 Ms. Krista Dahlstrom
 Dept. of Soc. & Anth./304 Asbury
 DePauw University
 Greencastle, IN 46135-0037
 kdahlstrom@depauw.edu
Jordan Buchanan
Nicholas Flores
Meghan Jenkins
Kelsey Moore
Paromita Sen
Zachary Young
Alicia Yurong

Eta of Indiana
 Dr. Jeremy Wilson
 Dept. of Anth./CA 413C
 Indiana U. Purdue U.-Indianapolis
 Indianapolis, IN 46202
 wilsojer@iupui.edu

Theta of Indiana
 Dr. Douglas Kline
 Dept. of Anthropology
 Indiana U. Purdue U.-Fort Wayne
 Fort Wayne, IN 46805-1499
 klined@ipfw.edu
Elizabeth Back
Kealy Bickel
Tanvi Chhatiawala
Melissa Cline
Liliana Dragnev
Ryan Frisinger
Kelsey Helmuth
Jennifer Hess
Laura Hilty
Stephanie Howe
Eric Johnson
Jessica Kellenberger
Ben Keplar
Adam Klein
Tiffany Kravec-Kelly
Larissa Lemaitre
Carla Meadows
Doris Moyers-Hornbogen
Jacqueline Reynolds
Paige Richie
Laura Roe
Victoria Salzbrun
Jack Schnellenberger
Maja Sljivar
Brandon Smith
Alan Tse
Emily Wright

IOWA

Alpha of Iowa-INACTIVE:1990
 University of Northern Iowa

Beta of Iowa
 Dr. Scott Schnell
 Dept. of Anthropology
 University of Iowa
 Iowa City, IA 52242-1322
 scott-schnell@uiowa.edu

Gamma of Iowa
Dr. Janet Wirth-Cauchon, Chair
Dept. for the Study of Culture
Drake University
Des Moines, IA 50311-4505
janet.wirth-cauchon@Drake.edu

Delta of Iowa
Dr. Jon Wolseth
Dept. of Anth./700 College Dr.
Luther College
Decorah, IA 52101-1045
wolsjo01@luther.edu
Molly Andersen
Timothy Campbell
Alex Clark
Richard DeVoss
Jeffrey Emerson
James Feinstein
Bezawork Hailemariam
Sylvie Hall
Meredith Harper
David Hecht
Audrey Herring
Kimberly Horner
Dustin Hrubby
Brittany Johnson
Kia Johnson
Molly Kline
Kirk Lehmann
Ellen Lynch
Max Molzahn
Amy Rieffer
Rebekah Ryan
Alison Sancken
Ashley Stockberger
Rebekka Willis

Epsilon of Iowa
Dr. Alfrieta Monagan
Dept. of Soc. & Anth.
Cornell College
Mount Vernon, IA 52314-1098
amonagon@cornellcollege.edu
Joshua Berger
Taylor Koch
Krzysztof Komperda
Christine Morfit
Emily Selindh
Elizabeth Veon
Sandra Whittington

KANSAS
FOUNDING CHAPTER OF
LAMBDA ALPHA:
Alpha of Kansas
Dr. Peer Moore-Jansen
Dept. of Anthropology
Wichita State University
Wichita, KS 67260-0052
pmoan@wichita.edu
Michael Able
Temperance Acquistapace
Andrew Berg
Kelly Eden
Samantha Nagel-Smith
Karie Railing
Lindsay Zeller

KENTUCKY
Alpha of Kentucky
Dr. Kate Hudepohl
Dept. of Folk Studies & Anth.
Western Kentucky University
Bowling Green, KY 42101-1029
kate.hudepohl@wku.edu
Amanda Forrester
Renee Pinkston

Beta of Kentucky
Dr. Anthony Ortmann
Dept. of Geos./334 Blackburn
Murray State University
Murray, KY 42071-3346
anthony.ortmann@murraystate.edu
Sarah Packett

Gamma of Kentucky
Dr. Barbara Thiel
Dept. of Sociology, Anthropology & Philosophy
Northern Kentucky University
Highland Heights, KY 41076
thielb@nku.edu
Matthew Buttacavoli
Justin Davis
Stacy Horn
Aleshia Hospelhorn
Emrys Lynch
Michael Ratliff
Krysta Wilham
Marcia Young
Peter Young

Delta of Kentucky
Dr. George Crothers
Dept. of Anthropology
University of Kentucky
Lexington, KY 40506-0024
gmcrot2@uky.edu
Christopher Gunn

Epsilon of Kentucky
Dr. Benjamin Freed
Dept. of Anthropology, et al
Eastern Kentucky University
Richmond, KY 40475-3102
benjamin.freed@eku.edu

Zeta of Kentucky
Dr. Christopher Begley
Dept. of Anthropology
Transylvania University
Lexington, KY 40508-1797
cbegley@transy.edu
Megan Bauers
Timothy Boyenton
Hillary Bullock
Abigail Dority
Crystal Emerson
Kayla Kidwell-Snyder
Nora Montgomery
Briana Nunn
Helen Oldham
Victoria Poindexter
Elizabeth Utley

Eta of Kentucky
Dr. Jianhua Zhao
Dept. of Anthropology
University of Louisville
Louisville, KY 40292
jh.zhao@louisville.edu
Jenna Elhaj
Danielle Jones
Kara Keeton
Jonathan Keith
Valerie Page
Cassandra Rausch
Brittany Saltsman
Deborah Silverman
Ryan Washam
Kassie Wentworth

LOUISIANA
Alpha of Louisiana
Dr. David Chicoine
Dept. of Geo. & Anth.

Louisiana State University
Baton Rouge, LA 70803-4105
dchico@lsu.edu

Beta of Louisiana
Dr. Judith Maxwell
Dept. of Anthropology
Tulane University
New Orleans, LA 70118
maxwell@tulane.edu

Gamma of Louisiana
Dr. William Fagan
Dept. of Social Sciences
Northwestern State University
Natchitoches, LA 71497
faganw@nsula.edu

MAINE

Alpha of Maine
Dr. Brian Robinson
Dept. of Anthropology
University of Maine
Orono, ME 04469-5773
brian.robinson@umit.maine.edu
Kendra Davis

MARYLAND

Alpha of Maryland
Chair
Behavioral Sci. & Human Serv.
Bowie State University
Bowie, MD 20715-9465

Beta of Maryland
Dr. Seth Messinger
Dept. of Soc.&Anth./1000 Hilltop
University of Maryland, Balt. Co.
Baltimore, MD 21250
sethm@umbc.edu
Douglas Bafford
Benjamin Blondell
Jennifer Burleyson
Pablo Clemente
Sean Espinora
Laura Green
Natasha Hagemeyer
Ashley Hanavin
Cameron Loats
Victoria Ng
Stephen Packard
Katrin Patterson
Sade Stanback
Caroline Sterling
Jacob Svobodny

Gamma of Maryland
Dr. Aaron Lampman
Dept. of Soc. & Anth.
Washington College
Chestertown, MD 21620-1197
alampman2@washcoll.edu
Rebecca Akdeniz
Joseph Batchelor
Tracey Bienemann
Jessica Brennan
Sarah Hartge
Marta Laskowski
Katelyn Malchester
Kelly Topita
Brittani Vanderwiele
Alyssa Velazques

Delta of Maryland
Dr. Bill Roberts
Dept. of Anthropology
St. Mary's College of Maryland
St. Mary's City, MD 20686-3001

wcroberts@smcm.edu

Allison Alexander
Sarah Blaik
Jonathan Borlo
Lex Corsenze
Victoria Danner
Juliana Franck
Benjamin Garbart
Mark Koppel
Mary Mansius
Alyssa Nutter
Sarah Platt
Allison Plaut
Aryel Rigano
Jessica Schroeder

MASSACHUSETTS

Alpha of Massachusetts
 Dr. Susan Rodgers
 Dept. of Soc. & Anth./Box 50A
 College of the Holy Cross
 Worcester, MA 01610-2395
 sroddgers@holycross.edu
Ariana Coniglio
Maria de la Motte
Jean Kim
Sasha Sakhtah
Rachael Stephens

Beta of Massachusetts
 Dr. Lauren Sullivan
 Dept. of Anthropology
 University of Massachusetts-Boston
 Boston, MA 02125-3393
 lauren.sullivan@umb.edu
Maria Abajian
Sally Adams
Jillian Alexander
Lindsey Bacon
Jessica Baldeck
Jennifer Bonna
Melissa Brodie
Jannett Garrido
Violeta Haralampieva
Chemaine Healy
Kalila Herring
Emily Kelly
Tariana Little
Thomas Mudge
Danielle Rigo-Reilly
Caitlin Tolliday
Colleen Tully

MICHIGAN

Alpha of Michigan
 Dr. Ananth Aiyer
 Dept. of Soc., Anth. & Soc. Wk.
 University of Michigan at Flint
 Flint, MI 48502-2186
 aiyer_a@umflint.edu

Beta of Michigan
 Dr. Azizur Molla
 Dept. of Anthropology/ASH 1155
 Grand Valley State University
 Allendale, MI 49401-9403
 mollaziz@gvsu.edu
Amy Akers
Adriana Berent
Kendall Gilbert
Jamie Gomez
Katie Helms
Jessica Holtz
Matthew Knaack
Kyle Legant
Jessica Miller
Danielle Negus
Mia Pokriefka
Matthew Schroeder

Jordan Sparks

Gamma of Michigan
 Dr. E. Liza Cerroni-Long
 Dept. of Anth., et al/712 P-H
 Eastern Michigan University
 Ypsilanti, MI 48197
 liza-cerroni-long@emich.edu
 -June, 2010 members:
Aimee Adams
Jeremy Bontemps
Joey Brandell
Chelsea Carter
Mary Chaplin
Catherine Devereaux
Emily Eppley
Jolynn Groves
Kelly Johnston
Anna Linda
Scott Pomerico
Kimberly Shay
 -July, 2011 members:
Caitlin Holloway
Peter Klotz
Ann Koscielniak
Brian Rakovitis
Kristin Rheinheimer
Marie Schaefer
Michael Volkman
Greta Welke
Megan Wonsowicz

MINNESOTA

Alpha of Minnesota
 Dr. Patric V. Giesler
 Dept. of Soc. & Anth.
 Gustavus Adolphus College
 St. Peter, MN 56082-1498
 pgiesler@gustavus.edu
Allyson Hannemann
Michael Hicks
Rima Kharbush
Meghan Lee

Beta of Minnesota
 Dr. Kathryn Elliott
 Dept. of Anthropology
 Minnesota State University
 Mankato, MN 56001
 kathryn.elliott@mnsu.edu
Katherine Ambre
Steven Burgstahler
David Wilson

Gamma of Minnesota
 Dr. Carolyn Anderson
 Dept. of Soc. & Anth.
 St. Olaf College
 Northfield, MN 55057
 anderscr@stolaf.edu
Green Bouzard
Miriam Brown
Kyle Cassling
Julia Coffin
Dana Goetsch
Alexia Gurtcheff
Zachary Hylton
Breanna Johnson
Eunyoung Jung
Alyssa Lynne
Sarah McGivern
Katherine McLarty
Sara Nobbs
Ingrid Olson
Kyla Riley
Joseph Schantz
Morgan Smith
Kylie Swanson
Karl Turnlund

Emily Van Essen

MISSISSIPPI

Alpha of Mississippi
 Dr. Toni Copeland
 Dept. of Sociology & Anthropology
 Mississippi State University
 Mississippi State, MS 39762
 tc657@msstate.edu
Stephen Davis
Drucilla Dickensheet
Mallory Henderson
Emily McGee
Kayleen McGuckin
Jacob Myers
Letecia Rader
Amanda Wilson
Sarah Zaleski

Beta of Mississippi
 Dr. Marie Elaine Danforth
 Dept. of Soc. & Anth.
 The University of Southern Mississippi
 Hattiesburg, MS 39406-5074
 m.danforth@usm.edu
Tyler Cargill
Britta Carpenter
Morgan Devlin
Amanda Harvey
Barbara McClenodon
Melissa McCraw
Caroline Miles
Nicole Musselwhite
Heather Murray
Susan Oubre
Stephanie Seal
Alisha Tyler

Gamma of Mississippi
 Dr. Gabriel Wrobel
 Dept. of Sociology & Anthropology
 The University of Mississippi
 University, MS 38677-1848
 gwrobel@olemiss.edu

MISSOURI

Alpha of Missouri
 Dr. Michael Ohnerson
 Dept. of Anth./507 Clark
 University of Missouri at St. Louis
 St. Louis, MO 63121-4400
 ohnersonm@umsl.edu
Kelly Clark
Justin Courtney
Pamela Neuman
Audrey Pavelka
Jason Vasser
Richard Williams

Beta of Missouri
 Dr. H. Kathleen Cook
 Dept. of Anthropology/Box 1114
 Washington University in St. Louis
 St. Louis, MO 63130
 hkcook@artsci.wustl.edu
Alex Akman
Amber Anders
Peter Angell
Micaela Attkins
Emily Babiss
Hilary Baianes
Katharine Benedict
Lurit Bepo
Joshua Berry
Rosemarie Blewitt
Julie Blouin
Clarissa Cagnato
Ellen Cody
Daniel Cohn

Rachel Craig
 Alexa DiFiore
 Savannah Dodd
 Chloe Edinger
 Laura Edison
 Leah Ewald
 Alexander Feng
 Jaelyn French
 Xinyi Ge
 Candace Girod
 Sasha Gottlieb
 Sara Henley
 Eve Herold
 Jalisa Hinkle
 Lindsay Hipp
 Stacey Hoffman
 Kieran Holzhauer
 Glenn House, Jr.
 Princeton Hynes
 David Iffrig
 Jessica Joganic
 Stephen Johnson
 Michelle Ju
 Lana Keerker
 Kate Klein
 Sarah Lacy
 Meredith Lanzen
 Matthew Lee
 Cara Levitch
 Ruth Lewit
 Joanne Li
 Victoria Lucas
 Sarah Lyon
 Rachel Mandelbaum
 Ioana Marcu
 Michele Markovitz
 Mariam Mathai
 Emily McNish
 Ryan Newberger
 Bethany Njoku
 Andrew Osborn
 Jentien Pan
 Chethan Rao
 Elizabeth Riley
 Ashlee Sang
 Hamsika Santanam
 William Schiedel
 Gregory Schwartz
 Angela Senne
 Simone Sept
 Nicholas Shaffer
 Sonia Singh
 Pooja Sohoni
 Patricia Strutz
 Matthew Techy
 Kyle Vickstrom
 Daniella Wald
 Christina West
 Christina Williams
 Sophia Wolman
 Jing Xu
 Becky Zhao
 Rebecca Zod

Gamma of Missouri
 Dr. R. Lee Lyman, Chair
 Dept. of Anthropology
 University of Missouri-Columbia
 Columbia, MO 65211
 lymanr@missouri.edu

Delta of Missouri
 Dr. Suzanne Walker-Pacheco
 Dept. of Soc. & Anth.
 Missouri State University
 Springfield, MO 65897
 SuzanneWalker@MissouriState.edu
 Mary Cartwright
 Aimee Ha

Brittany Pepper
Sarah Skaggs

Epsilon of Missouri
 Dr. Jong Bum Kwon
 Dept. of Behav. & Soc. Sci.
 Webster University
 St. Louis, MO 63119-3194
 kwon.jongbum@webster.edu
Lena Baker
Hannah Shayer
Kayla Thompson

Zeta of Missouri
 Dr. Amber Johnson, Chair
 Dept. of Society & Environ.
 Truman State University
 Kirksville, MO 63501-4221
 ajohnson@truman.edu
Rudolf Cesaretti
Katie Dye
Amber Johnson
Hannah Motes
Kevin Sack
Alexander Senger

MONTANA

Alpha of Montana
 Dr. Laurence Carucci
 Dept. of Soc. & Anth.
 Montana State University
 Bozeman, MT 59717-0238
 lamaca@montana.edu
Jane Connors
Sarah MacDonald
Scott Raznoff

Beta of Montana
 Dr. John Douglas, Chair
 Dept. of Anthropology
 University of Montana
 Missoula, MT 59812-1001
 john.douglas@umontana.edu
Kalie Bowar

NEVADA

Alpha of Nevada
 Dr. Jennifer Thompson
 Dept. of Anth. & Ethnic Studies
 University of Nevada at
 Las Vegas, NV 89154-5012
 jennifer.thompson@unlv.nevada.edu
Dashiell Glazer
Mary Goodrich
Hilary Hoskins
Chase Jansson
Angela Lewis
Tatianna Menocal
Melody Zionch

NEW HAMPSHIRE

Alpha of New Hampshire
 Dr. Debra Picchi
 Dept. of Anthropology
 Franklin Pierce University
 Rindge, NH 03461-0060
 picchids@fpc.edu

NEW JERSEY

Alpha of New Jersey
 Dr. Fred McKittrick, Chair
 Dept. of History & Anth.
 Monmouth University
 West Long Branch, NJ 07764-1898
 @monmouth.edu
Victoria Avon
Kaitlyn Bouchard
Kate Carpenter
Carissa Franzi

Danielle Gleason
Samantha Herman
Ramsey Ismail
Laura Ledman
Jenna McMahon
Eliza Miller
Jennifer Pettillo
Jenna Scapicchio
Marie Scott
Melissa Sedlacik
Jessica Slinger
Daniel Sohler
Lara Swan
Suzanne Toriello
Jennifer Tortorelli
Mary JoAnn Wilks
Jessica Wilson
Eric Winters

Beta of New Jersey
 Dr. Elaine Gerber
 Dept. of Anthropology
 Montclair State University
 Upper Montclair, NJ 07043
 gerbere@mail.montclair.edu
Heather Altschuler
Laura Bielskie
Hillary Edelson
Jessica Feygin
Jennifer Hennion
Megan Kearney
Melany Lazo
Anthony Marrone
Katherine Milsop
Joshua Vink

Gamma of New Jersey
 Dr. Tom Gundling
 Dept. of Anthropology
 William Paterson University
 Wayne, NJ 07470-2103
 gundlingt@upunj.edu

Delta of New Jersey
 Dr. Cherubim Quizon
 Dept. of Soc. & Anth.
 Seton Hall University
 South Orange, NJ 07079-2687
 quizonch@shu.edu
Jessica Canavan
Zuleydi Fuentes
Roseanne Johnson
Brittany Lukac
Edward Millar
Peter Savastano
Amanda Thorn
Jennifer Todd
William Torres

Epsilon of New Jersey
 Dr. David Hughes
 Dept. of Anthropology
 Rutgers University
 New Brunswick, NJ 08901-1414
 dhughes@rutgers.edu
Kevin Calvey
Krista Pecoraro

Zeta of New Jersey
 Dr. Allan Dawson
 Dept. of Anth./36 Madison Ave.
 Drew University
 Madison, NJ 07940
 adawson@drew.edu
Gus Baxter
Kirstin Bethavas
Janine Billadello
Connor Bradley
Robert Guanci

Diane Matute
Nelson Melendez
Steven Rogers
Hope Ross
Dana Schmidt
Delia Seitz
Jordan Stamper
Katharene Suarez
Brandon Talley

NEW MEXICO

Alpha of New Mexico
Dr. Lois Stanford
Dept. of Soc. & Anth.
New Mexico State University
Las Cruces, NM 88003-8001
lstanfor@nmsu.edu
Brittany Atteberry
Sarah Clark
Leigh Cooper
Kristin Corl
Kylin Cummings
Randee Fladeboe
Amy Frazen
Allison Harvey
Stephanie Hawkins
Joel Lenner
Ashley Remy
Lindsey Reyes
Jamie Vela
Nina Williams

NEW YORK

Alpha of New York
Dr. Patricia Whelehan
Dept. of Anthropology
SUNY – Potsdam
Potsdam, NY 13676-2294
whelehpe@potdamsu.edu
Nia Alecsynas
Kristara Bly
Kara Chapin
Stephanie Ciotti
Jennifer Dawson
Lauren Dodaro
Amanda Hernandez
Grace Highsmith
Alyssa Lemmermann
Andrea Levine
Alexandra Morris
Jared Muehlbauer
Jacob Orcutt
Chelsea Richard

Beta of New York
Dr. Mary H. Moran
Dept. of Soc. & Anth.
Colgate University
Hamilton, NY 13346-1398
mmoran@mail.colgate.edu
-inducted June, 2010:
Elise Bronzo
Victoria Cubera
Laura Davidson
Ashley Dronsfield
Jacob Epstein
Myra Guevara
Allison Patchen
Samantha Levine
Rebecca Liebeskind
Margaret Mariani
Juliet Okpalanma
Arpitha Peteru
Alexandra Ross
Emma Schumacher
Giovonne Vernacchia
Alison Wohlers

Delta of New York
Dr. Douglas V. Armstrong
Dept. of Anth./209 Maxwell Hall
Syracuse University
Syracuse, NY 13244-1090
darmstrong@maxwell.syr.edu
Firdaus Arastu
Lauren Califano
Lauren Deyo
Martin Fernandez
Hannah Greenblatt
Catherine Mehta
Catherine Varonko

Epsilon of New York
Dr. Rose-Marie Chierici
Dept. of Anthropology
SUNY at Geneseo
Geneseo, NY 14454-1401
chierici@geneseo.edu
Megan Chapin
Chong Choe
Abigail Erker-Ferreira
Kevin Felter
Brian House
Tara Imparato
Joel Johnson
Aaron Kather
Christopher Keegan
Marissa Konieczko
Emma Loe
Emma Rumley
Christopher Saunders
Emilia Tallon
Tracie Terrana
Nicole Tsien
Loretta Tucker
Meagan Wheatley
Shana Wierchowski

Zeta of New York
Dr. Sharon Gmelch
Dept. of Soc. & Anth.
Union College
Schenectady, NY 12308-2365
gmelchs@union.edu

Eta of New York
Dr. Timothy P. Daniels
Dept. of Soc. & Anth.
Hofstra University
Hempstead, NY 11549-1090
Timothy.P.Daniels@hofstra.edu
Danielle Demers
Rachel Iacangelo
Austin Lambright
Raisa Lardie
Christopher Oakland

Theta of New York
Dr. Connie M. Anderson
Dept. of Anthropology
Hartwick College
Oneonta, NY 13820
andersonc@hartwick.edu
Johnathan Bruce
Elizabeth Celata
Blair Coppola
Chandler Guptill
Ashley Hunt
Eryn Niblick

Iota of New York
Dr. Richard Gonzalez
Dept. of Anthropology
St. Lawrence University
Canton, NY 13617-1475
rgonzalez@stlawu.edu
Claire Alai

Jenna Farmer
Alison LePage
Chelsea McKenzie
Russell Newton
William Snyder

Kappa of New York
Dr. Stephen Saraydar
Dept. of Anth./Mahar Hall
SUNY at Oswego
Oswego, NY 13126
saraydar@oswego.edu
Lindsey Blum
Alysson Bubbins
Hannah Clark
Abby Gymburch
Kaci Hucknall
Thomas Santmyer, Jr.
Khrystyne Tschinkel
Chenshen Wang
Kimberly Weaver
Amanda Woomer

Lambda of New York
Dr. Peter Biehl, Chair
Dept. of Anthropology
SUNY at Buffalo
Buffalo, NY 14261-0026
pbiehl@buffalo.edu

Mu of New York
Dr. Robin O'Brian
Dept. of Anth. & Soc.
Elmira College
Elmira, NY 14901
ROBrian@elmira.edu

Nu of New York
Dr. Anagnostis P. Agelarakis
Dept. of Anthropology
Adelphi University
Garden City, NY 11530
agelarak@adelphi.edu
Santina Bonsignore
Nicole Bruno
Erin Gill
Nicole Hernandez
Gina Lella
Cheyenne Paris

Xi of New York
Dr. Sean Rafferty
Dept. of Anth./AS237
SUNY at Albany
Albany, NY 12222
rafferty@albany.edu
Elizabeth Birch
Gregg Castellini
Shannon Coleman
Catherine Crenson
Brenda Dwyer
John Edvalson
Rachel Forbes
Lisa Fuchs
Brad Gawron
Bryanna Hebenstreit
Brett Herbst
Jillian Jeffrey
Jacqueline Kentz
Megan Knickerbocker
Sarah Kraft
Danielle Kuehnel
Patrick Lathrop
Meaghan Leary
Claire Lubber
Jaime Moore
Adenike Olowu
Rebecca Paskiet
Courtney Piet

Christine Preble
 Kristina Sanchez
 Alora Sansola
 Jason Sapper
 Kathryn Schimanski
 Sarah Taylor
 Cuauhtemoc Vidal-Guzman
 Kweku Williams

Omicron of New York
 Dr. Michael Malpass
 Dept. of Anth./116 Gannett
 Ithaca College
 Ithaca, NY 14850
 malpass@ithaca.edu

Alexa Bonaros
Mary Bowers
Cristin Carlin
Valerie Falconieri
Christina Faulkner
Megan Kelly
Andrew Lane
Stefanie Altman
Morgan Milazzo
Chloe Nelson
Cherrie Rhodes
Talia Watson
Daniel Weller

Pi of New York
 Dr. Celeste Gagnon
 Dept. of Soc. Sci./205 Parker
 Wagner College
 Staten Island, NY 10301
 celeste.gagnon@wagner.edu

Gabrielle Gill
Jennifer Ida
Jessica Jaeger
Julianne Rosewarne
Rose Tobiassen

NORTH CAROLINA

Alpha of North Carolina
 Dr. Paul Thacker
 Dept. of Anthropology
 Wake Forest University
 Winston-Salem, NC 27109-7807
 thackep@wfu.edu

Leah Beachley
Amanda Blythe
Olivia Boyce
Hanna Bredenbeckcorp
Caitlin Brooks
Julia Claiborn
Elizabeth Cooper
Alexandra Crossman
Caroline Dignes
Dain Finke
Meaghan Gartner
Hannah Greenough
Adrienne Hembree
Katarina Kazickas
Abbey Keener
John Keller
Roger Kirkpatrick
Annabel Lang
Sarah Lobert
Anthony Martinez
Alexander Metz
Remy Olsen
William Owens
Brooke Pendleton
Hope Scofield
Emily Smiley
Carrie Stokes

Beta of North Carolina
 Dr. Robert L. Bunker
 Dept. of Anthropology

East Carolina University
 Greenville, NC 27834-4353
 bungerr@ecu.edu
Nazenin Carpenter
Shannon Kreider
Rachel Murphy
Tensley Nesbitt
Gregory Stratton
Gatha Tyson
Aretta Williams

Gamma of North Carolina-INACTIVE:1985
 Chair
 Dept. of Anthropology
 University of North Carolina
 Chapel Hill, NC 27414

Delta of North Carolina
 Dr. Susan Andreatta
 Dept. of Anthropology
 University of North Carolina at Greensboro
 Greensboro, NC 27402-6170
 s_andrea@uncg.edu
Victoria Johnson
Robert Mallette
Michael McNair, Jr.

Epsilon of North Carolina
 Dr. Susan Keefe
 Dept. of Anthropology
 Appalachian State University
 Boone, NC 28608-2016
 keefese@appstate.edu

Jesse Berkowitz
Elizabeth Blevins
Jacqueline Clubine
Cathleen Evans
Ashley Fields
Kirtland Flynn
Jennifer Hill
Katrina Kremer
Rachel Little
Tiffany Pardue
Caitlin Patton
Michael Sudol
Janelle Wienke

Zeta of North Carolina
 Dr. Janet Levy
 Dept. of Anthropology
 University of North Carolina at
 Charlotte, NC 28223-0001
 jelevy@email.unc.edu

Robert Benitez
Michael Burson
Sarah Clarke
Jessica Injejkian
Caroline Kennedy
Mary Malinsky
Alicia Messick
Samantha Miller
Steven Montgomery
Olivia Shen

Eta of North Carolina
 Dr. Nora Reber
 Dept. of Anthropology
 The University of North Carolina at
 Wilmington, NC 28403-5907
 rebere@uncw.edu

Steven Autry
Emily Brantley
Jordan Brouchoud
Jessica Daley
Caitlin Gilroy
Lindsay Hollingsworth
Matthew Kerr
Rachel Kiliany
Jennifer McGroarty

Nate Oxenfeld
Susan Smith
Elizabeth Soukup
Lynne Walker

OHIO

Alpha of Ohio
 Dr. Robert V. Riordan
 Dept. of Soc. & Anth.
 Wright State University
 Dayton, OH 45435-0001
 rriordan@wright.edu

Beta of Ohio-INACTIVE:1993
 Dr. David M. Stothers
 Dept. of Soc., Anth. & Social Work
 University of Toledo
 Toledo, OH 43606-3390

Gamma of Ohio
 Dr. P. Nick Kardulias
 Dept. of Soc. & Anth.
 College of Wooster
 Wooster, OH 44691-2363
 pkardulias@acs.wooster.edu

William Arnold
Haley Close
Anna Goodman
Amanda Gottesman
Casey Henry
Meghan Hough
Amanda Sidman
Kendra Spergel
Sarah Tate
Sarah Uschak

Delta of Ohio
 Dr. Hogan Sherrow
 Dept. of Soc. & Anth./162 Bentley
 Ohio University
 Athens, OH 45701-2979
 sherrow@ohio.edu

Seth Bainbridge
Amanda Bethel
Sydney Capito
Katherine Denning
Laura Ellis
Kelsie Geyer
SaraEmily Gunsch
Ronald Hedrick
Bryan Hoynacke
Adam Knox
Megan Kraus
Camille Kronk
Ashley Luthern
Marilyn Maher
Jessica Markowitz
Leah Miracle
Jessica Munday-McGee
Katelyn Oltersdorf
Hannah Plumer
Andrea Reed
Colin Rice
Joanna Snedden
Shannon Vance
Brianna Walker

Epsilon of Ohio
 Dr. William S. Dancy
 Dept. of Anthropology
 The Ohio State University
 Columbus, OH 43210-1364
 dancy.1@osu.edu

Zeta of Ohio
 Dr. Paul Aspelin
 Dept. of Anthropology
 Cleveland State University
 Cleveland, OH 44115-2214

p.aspelin@csuohio.edu
Julie Adamic
Steven Banjoff
Emily Bettin
Meghan Bohardt
Douglas Boncha
Nicholas Burnett
Renee Henisch
Angela Justice
Justin Price
Christine Pyles
Melissa Trahan
Joshua Van Drei
Cassandra Walker

Eta of Ohio
 Dr. Veerendra P. Lele
 Dept. of Soc. & Anth.
 Denison University
 Granville, OH 43023-0810
 lelev@denison.edu
James Courtright
Emily Ernes
Olivia Gray Be
Anna Hammersmith
Melissa Henry
Megan Keaveney
Chelsea McGill
Lauren Pyle
Lauren Sabo
Kelsey Sullivan
Shuangqi Wang

OKLAHOMA

Alpha of Oklahoma
 Dr. Lamont Lindstrom
 Dept. of Anth./800 S. Tucker
 The University of Tulsa
 Tulsa, OK 74104-3189
 lamont-lindstrom@utulsa.edu
Mary Jean Loshner
Lauren Nickel

OREGON

Alpha of Oregon
 Dr. Sunil Khanna
 Dept. of Anthropology
 Oregon State University
 Corvallis, OR 97331-6403
 skhanna@orst.edu

Beta of Oregon
 Dr. Sharon Carstens
 Dept. of Anthropology
 Portland State University
 Portland, OR 97207-0751
 b5sc@pdx.edu
Julia Cleary
Leslie Crippen
Ridhi D'Cruz
Samantha Gentz
Karen Hopkins
Darryl James
Michelia Kramer
Amanda Lubit
Christopher Milton
Margaret Moore
Michael Myers
Autumn Rosendahl
Anastasia Smith
Karen Ulbright
Vanessa van der Borg
Kevin Williams
Kathryn Wojcik
Dianna Woolsey
Alysia Wright
William York

Gamma of Oregon
 Dr. Cheleen A.C. Mahar
 Anth./2043 College/UC476
 Pacific University
 Forest Grove, OR 97116
 maharca@pacificu.edu
Charlotte Basch
Krystal Chitwood
Micah Gomes
Emma Jacobsen
Megan Roger

PENNSYLVANIA

Alpha of Pennsylvania-INACTIVE
 Alliance College

Beta of Pennsylvania-INACTIVE:1996
 Gannon University

Gamma of Pennsylvania
 Dr. John P. Nass, Jr.
 Dept. of Anth. Sec./250 University
 California University of Pennsylvania
 California, PA 15419-1394
 nass@cup.edu
Sarah Abbott
Sean Rothhaar

Delta of Pennsylvania
 Dr. Kathleen M. Allen
 Dept. of Anth./3123WWPH
 University of Pittsburgh
 Pittsburgh, PA 15260
 kmallen+@pitt.edu
Charlotte Binkoski
Anthony Casciano
Nicole Coreia
William Greenaway
Alyson Goldsmith
Lauren Hill
Sammantha Holder
Andrew Marx
Lindsay Miller
Colleen O'Neil
Brittany Quinn
Nick Tomsho
Danielle Schwimer
Melanie Siokalo
Christopher Stairiker
Brooke Wiczorek

Epsilon of Pennsylvania
 Dr. Francis Allard
 Dept. of Anth./G1C McElhaney
 Indiana University of Pennsylvania
 Indiana, PA 15705-1018
 francis.allard@iup.edu
Kimberly Brown
Pamella Clouser
Matthew Finley
Chelsea McDonnell
Shane Myers
Ashley Shelton

Zeta of Pennsylvania
 Dr. Faith Warner
 Dept. of Anthropology
 Bloomsburg University
 Bloomsburg, PA 17815-1301
 fwarner@bloomu.edu
Shannon Bilder
Tracy Byrne
Molly Conlin
Jennifer Culeman
Jennifer D'Amico
Morgan Fornwald
Kristin Kelly
Karissa Rose
Kristy Turnbull

Brittany Vaszlavik
Merredith Womer
Melanie Yodock
Eva Yuen
Ashlea Zantene

Eta of Pennsylvania
 Dr. Claire Milner
 Dept. of Anthropology
 The Pennsylvania State University
 University Park, PA 16802
 cmm8@psu.edu

Theta of Pennsylvania
 Dr. Donna L. Perry
 Dept. of Soc. & Anth.
 Gettysburg College
 Gettysburg, PA 17325-1486
 dperry@gettysburg.edu
Kyra Fallon
Paige Phillips
Meghan Quirk
Gracie Raver
Angela Rosehart
Laura Saporito
Kara Tzinivis

Iota of Pennsylvania
 Dr. Elizabeth Newell
 Dept. of Soc. & Anth.
 Elizabethtown College
 Elizabethtown, PA 17022-2298
 newellea@etown.edu
Sierra Calaman
Rebecca Dowling
Julie Foster
Amanda Harris
Jennifer Melnick
Matthew Orlando
Barbara Prince
Dorothy Ryan
Paige Service
Michael Shields
Kathryn Varner
Taylor Wambaugh

SOUTH CAROLINA

Alpha of South Carolina
 Dr. Dee Dee Joyce
 Dept. of Soc. & Anth.
 College of Charleston
 Charleston, SC 29424-0001
 joyced@cofc.edu
Julia Askins
Lauren Bader
Justin Carlson
Rachel Christensen
Kelly Couch
Amy Dubis
Doreene Durant
Jordan Eades
Nathan Fulmer
Robert Heard
Jessica Hoffmann
Whitney Isley
Margaret Jordan
Catherine Marshall
Tristan Richardson
Kaitlin Rosenblum
Brieanna Winkelmann
Ashley Woodcock

SOUTH DAKOTA

Alpha of South Dakota
 Dr. Dona Davis
 Dept. of Anthropology
 University of South Dakota
 Vermillion, SD 57069

TENNESSEE

Alpha of Tennessee
Dr. Andrew Kramer
Dept. of Anthropology
The University of Tennessee
Knoxville, TN 37996-0720
akramer@utk.edu

Beta of Tennessee
Dr. Murl O. Dirksen
Dept. of Hist. & Poli. Sci.
Lee University
Cleveland, TN 37320-3450
mdirksen@leeuniversity.edu

Gamma of Tennessee
Dr. H. Lyn Miles
Dept. of Anthropology
University of Tennessee at
Chattanooga, TN 37403
lyn-miles@utc.edu

TEXAS

Alpha of Texas
Dr. Angela Keller
Dept. of Soc. & Anth./601 S. Nedderman
The University of Texas at
Arlington, TX 76019-0599
ahkeller@uta.edu
Megan Bruton
Aimee Cooley
Hannah Davis
Crystal Massie
Hannah Nutt
William Nutt
Jacob Reed

Beta of Texas
Dr. Shelia Pozorski
Dept. of Psych. & Anth./1201 W. Univ.
The University of Texas, Pan American
Edinburg, TX 78539-2999
spozorski@panam.edu
Edelio Bazan
Jocelyn Goines
Walter Guerra
Jessica Hawkins
Sandra Hernandez-Salinas
Ashley Leal
Rebecca Zavala

Gamma of Texas
Dr. Michael Cepek/Dr. Deborah Wagner
Dept. of Anthropology
The University of Texas at
San Antonio, TX 78249-0652
michael.cepek@utsa.edu
Dominique Avery
Twaney Bailey
Lori Barkwill-Love
Victoria Benavidez
Justin Blomquist
John Boom
La De Campbell
Rhiana Casias
Kelly Denham
Letesha Dixon
Rebecca Edgin
Mark Eli
Nicholas Ellwanger
Gina Engolia
Tara Fletcher
Nathan Foote
Desire Garcia
Jose Gomez
Kristina Hendry
Ashley Hizey
Alethea Holmes
Teresa Klemcke

Christine Kolar
Lauren Kornegay
Emily Lloyd
Christina Mandell
Grainne McCabe
McLane Marchbanks
Amy Mueller
Andrew Nicholl
Andrew Oberle
Rachel Pecotte
Carla Pezzia
Sarah Shanahan
Charles Smith
Kelsie Spenger
Joey Stahl
Andrew Stahlman
Caitlin Terry
Rosanna Villarreal
Sarah Wigley

Delta of Texas
Dr. Arthur Durband
Dept. of Anth., etc./158 Holden
Texas Tech University
Lubbock, TX 79409-1012
arthur.durband@ttu.edu
Jody Creel
Elizabeth Crockford-Peters
Ethan Hill
Kalen Hoel
Terry Knight
Candice Rendon
Vincent Sisneros
Micah Thal
Jonathan Welch
Adam Williams

Epsilon of Texas
Dr. Jennifer Mathews
Dept. of Soc. & Anth.
Trinity University
San Antonio, TX 78212-7200
jmathews@trinity.edu
Moria Allen
Laura Barron
Caitlin Bayer
Dorsa Carr
Dana Carter
Sarah Dropek
Elizabeth Frost
Abigail Loar
Mary Warren

Zeta of Texas
Chair
Dept. of Anthropology
The University of Texas, Austin
Austin, TX 78712-0303
@utexas.edu

Eta of Texas
Dr. Beverly Davenport
Dept. of Anth./P.O.Box 310409
University of North Texas
Denton, TX 76203-0409
beverlyd@pacs.unt.edu
Herman Abuchowski
Matthew Baline
Sarah Cardenas
Melissa Davis
Brittany Donnelly
Jacqueline Garrison
Nancy Gillis
Caitlin Gilmore
Michael Giuletti
Megan Gorby
Kendra Harrell
Ona Harris
Amanda Harrison

Jocelyn Huelsman
Meredith Knouse
Keith Latham
Leroy Latty
Louis Liao
Sierra Mosier
Raoul Rolfes
Roy Robertson
Cindy Romero
Carlos Smyth
Ivonne Solano
Jonathan Tomhave
Angelica Whitehurst
Brandi Williams

Theta of Texas
Dr. Jon McGee
Dept. of Anth./232 ELA, 601 Univ.
Texas State University
San Marcos, TX 78666-4616
rm08@txstate.edu
Monica Ahsan
Rachael Bogan
Bonnie Chilton
Laura Denton
Kirsten Dews
Jessica Field
Davette Gadison
Krystle Haney
Adam Hughes
Katie Kaptain
Thomas Pena
Crystal Platz
Amber Plemons
Jamie Royer
Senna Thornton-Barnett
Jennifer Tovar

Iota of Texas
Dr. Robert Van Kemper
Dept. of Anthropology
Southern Methodist University
Dallas, TX 75275-0336
rkemper@smu.edu
Aaron Barnes
Emily Cochran
Kelley Cordsen
Logan Hutton
Kathryn Pocklington

Kappa of Texas
Dr. Garrett Cook
Dept. of Anthropology, etc.
Baylor University
Waco, TX 76798-7173
garrett_cook@baylor.edu
Digna Bonilla
Alexis Casiano
John Cavazos
Hasan Dimayuga
Nathaniel Fischer
Elizabeth Joyce
Miranda Leddy
Anna McClain
Briana Payne
Danielle Schifferdecker
Sarah Sickler
Nikki Silva
Nachelle Wilson
Melissa Windham
Laurel Witt
Ashley Yeaman

UTAH

Alpha of Utah-INACTIVE:1997
 Dr. David F. Lancy
 Dept. of Social Work, Soc. & Anthro.
 Utah State University
 Logan, UT 84322-0730
 dlancy@cc.usu.edu

VERMONT

Alpha of Vermont
 Dr. Cameron Wesson, Chair
 Dept. of Anthropology
 University of Vermont
 Burlington, VT 05405-0168
 cwesson@uvm.edu

VIRGINIA

Alpha of Virginia
 Dr. Donna C. Boyd/Dr. Cassidy Yoder
 Dept. of Soc. & Anth./Box 6939
 Radford University
 Radford, VA 24142
 dboyd@radford.edu
Leslie Abernathy
Brittany Belew
Heather Bostic
Erin Garner
Charity Gaylor
Ashley Jones
Jason Lesko
Anthony Mollignoni
Alaina Walker
Michelle Whitman
Caitlin Worsham

Beta of Virginia
 Dr. Andrew Bickford
 Dept. of Soc. & Anth./MS 3G5
 George Mason University
 Fairfax, VA 22030-1446
 @gmu.edu

Kathleen Dorn
Chelsea Horton
Emily MacDougall
Benjamin Morley
Elizabeth Northcutt
William Rogers
Mary Shubert
Sarah Taylor
Amber Tolbert
Lauren Tomanelli

Gamma of Virginia
 Dr. Jonathan Glasser
 Dept. of Anthropology
 The College of William and Mary
 Williamsburg, VA 23187-8795
 jglasser@wm.edu
Lindsey Carver
Erika Hottle
Meredith Luze
Allison Mickel
Rebekah Rochte
Zachary Stocks
Linda Trucchi
Courtney Williams

Delta of Virginia
 Dr. Doug Dalton
 Dept. of Anthropology
 Longwood University
 Farmville, VA 23909-1801
 daltondm@longwood.edu

Oliver Aurand
Jacob Babb
Sarah Blevins
Alexa Boucher
Charles Cate
Christopher Cooper

Dathleen Donovan
Rudolph Fletcher
Alyssa Foley
Amber Hirst
Caitlin Johnson
Kelsey Long
Carrie Mosby Bryan Roethel
Lynsie Russ
Courtney Traylor
Semein Washington
Storm Webb
Jacqueline Wood
Jennie Yuhas

Epsilon of Virginia
 Dr. Julie Solometo
 Dept. of Soc. & Anth./7501 MSC
 James Madison University
 Harrisonburg, VA 22807
 solomejp@jmu.edu
Katherine Benusa
Tatiana Cornejo
Amanda Kelch
Kimberly Musick
Melissa Price
Ariane Shahbazi
Daniel Singer
Joshua Stairs
Michelle Sunda
Alysha Youngberg

Zeta of Virginia
 Dr. Sascha Goluboff
 Dept. of Soc. & Anth.
 Washington and Lee University
 Lexington, VA 24450-2116
 goluboffs@wlu.edu
Lauren Acker
Francis Cullo
James Flexner
Makenzie Hatfield
Danielle Maurer
Lev Raslin
Nicole Rose
Erika Vaughn

Eta of Virginia
 Dr. Jennifer Nourse
 Dept. of Soc.&Ant./302 Weinstein
 University of Richmond
 Richmond, VA 23173
 jnourse@richmond.edu
Emily Bowden
Carey Finshem
Emily Fitzpatrick
Andrea Hague
Jake Hargadon
Maria Lee
Grace Leonard
Tiffany Taylor
Ganyapak Thanesnant
Lauren Trueax
Caroline Wisler
Julia Zeller

WASHINGTON

Alpha of Washington
 Dr. Julia Smith
 Dept. of Geo. & Anth./103 Isle Hall
 Eastern Washington University
 Cheney, WA 99004-2499
 jsmith4@mailserver.ewu.edu

Beta of Washington
 Dr. Rob Quinlan
 Dept. of Anthropology
 Washington State University
 Pullman, WA 99164-4910
 rquinlan@wsu.edu

Pasang Yangjee Sherpa

Gamma of Washington
 Dr. Joseph Lorenz
 Anth./400 E. University/309 Farrell
 Central Washington University
 Ellensburg, WA 98926-7544
 Lorenzj@cwu.edu
Roger Bickford
Ryan Dykes
Anne Hice
Patrick Rennaker
Tawnya Rockney
Noah Simons

WEST VIRGINIA

Alpha of West Virginia
 Dr. Adam Dasari
 Dept. of Soc. & Anth.
 West Virginia University
 Morgantown, WV 26506-6326
 Adam.Dasari@mail.wvu.edu

Beta of West Virginia
 Dr. Nicholas Freidin
 Dept. of Soc. & Anth.
 Marshall University
 Huntington, WV 25755-2678
 freidin@marshall.edu

WISCONSIN

Alpha of Wisconsin
 Dr. Stephanie Aleman
 Dept. of Philosophy
 University of Wisconsin at
 Stevens Point, WI 54481-3897
 salemo@uwp.edu

Beta of Wisconsin
 Dr. Laura Villamil
 Dept. of Anthropology
 University of Wisconsin at
 Milwaukee, WI 53201
 laurav@uwm.edu

Gamma of Wisconsin
 Mr. Daniel Strouthes
 Dept. of Anth./105 Garfield
 University of Wisconsin-Eau Claire
 Eau Claire, WI 54702-4004
 stroutdp@uwec.edu

Delta of Wisconsin
 Dr. Peter Peregrine
 Dept. of Anth./711 E. Boldt Way
 Lawrence University
 Appleton, WI 54911
 Peter.N.Peregrine@Lawrence.edu
Emily Bablitch
Abigail Beneke
Jonathan Blinderman
Providence Duggan
Aisha Eiger
Richard Foreman
Emily Gibbons
Jana Greenslit
Emily Hallock
Emma Kane
Valerie Nelson
Cadence Peckham
Caleb Ray
Hari Shamatt
Zachary Szoke

The *Lambda Alpha Journal* is the annual student journal of the Lambda Alpha National Collegiate Honors Society for Anthropology. It publishes a wide range of articles on archaeological, biological, cultural and linguistic topics. Submission of articles is open to both members and nonmembers. Please contact the Editor-In-Chief, Peer H. Moore-Jansen, Ph.D., for a detailed description of the proper formatting. You may visit <http://soar.wichita.edu/dspace/handle/10057/782> to view three *Journal* volumes, with more volumes to be added in the future.

LAMBDA ALPHA JOURNAL SUBSCRIPTION FORM

VOLUME #	YEAR	QTY.	PRICE	SUBTOTAL
----------	------	------	-------	----------

SUBSCRIPTION OPTIONS:

INSTITUTIONAL SUBSCRIPTION	\$10 (INCL. S&H) PER VOLUME	_____	
CHAPTER SUBSCRIPTION	\$10 (INCL. S&H) PER VOLUME	_____	
CHAPTER SUBSCRIPTION FOR 10+ copies	\$8 (INCL. S&H) PER VOLUME	_____	

TAX	_____
S&H	0
TOTAL	_____

METHOD OF PAYMENT:

MONEY ORDER OR CHECK # _____ MADE PAYABLE TO: *Lambda Alpha Journal*

MAIL TO:

Circulation, *Lambda Alpha Journal*
 Wichita State University
 Department of Anthropology
 1845 Fairmount, Box 52
 Wichita, KS 67260-0052

Inquiries can be directed to the editor-in-chief at pmojan@wichita.edu.

PHONE: 316.978-3195
 FAX: 316.978.3351



Satin Stole

We have a supply of satin Lambda Alpha honor stoles that may be worn on your graduation gown for \$25. In addition, we also have cloisonné tack bearing the emblem and colors of our organization for \$10.



Cloisonné Pin

Please use the following order form:

Our chapter would like _____ satin stoles @\$25 each/ _____ cloisonné pins @\$10 each.

Amount enclosed: _____ Date needed: _____

Name _____

Chapter / College _____

Address _____

City _____ State _____ Zip _____

Please send cash or check payable to Lambda Alpha:

Lambda Alpha National Office
Attn: Barbara Di Fabio
Department of Anthropology
Ball State University
Muncie, IN 47306-0435

Order Form

There are also extra newsletters from 2003 to present, as well as photocopies from 1993 to 2002.

Please specify which year/years: _____

The newsletter is also posted on our web site: www.lambdaalpha.com

Lambda Alpha
Annual Newsletter

PLEASE DUPLICATE
FOR FUTURE ORDERS



National Office of Lambda Alpha is located in the Burkhardt Building shown in this photograph, on the Ball State University campus.



**BALL STATE
UNIVERSITY.**

*Lambda Alpha
Department of Anthropology
Ball State University
Muncie, IN 47306-0435*